

SELLING & RENTING
HOMES
— Since 2005 —



LAND ESTATES
SALES, LETTINGS & MANAGEMENT



MARTIN DRIVE STONE

£1,750 Per Month

- 6 Months Tenancy Only.
- Modern throughout.
- Walk in wardrobe.
- Two allocated parking spaces.
- Walking distance to a variety of transport options.
- Three bedroom apartment.
- Integrated appliances.
- En-suite shower room.
- Walking distance to a variety of schools.

6 MONTHS TENANCY ONLY!

Land Estates are pleased to present this unique, three bedroom apartment in Dartford.

This property is located on the top floor and boasts a huge amount of space.

This property consists of a large lounge/kitchen with integrated appliances, three double bedrooms, a bathroom and an en-suite shower room. The third bedroom has a walk in wardrobe.

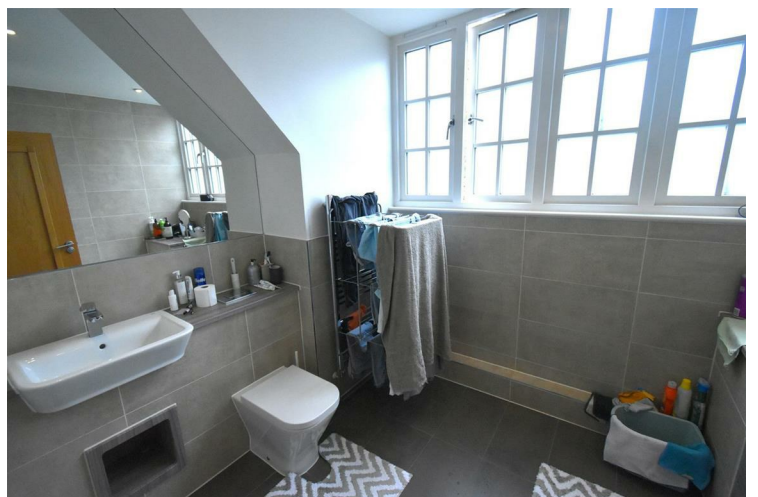
The property benefits from a large amount of storage and has two allocated parking spaces.

Martin Drive is located in a modern development and is within walking distance to a variety of schools, shops and transport options.

This property is offered furnished and is available from mid April.

To arrange a viewing, please contact Land Estates.







Energy Efficiency Rating		
	Current	Potential
Very energy efficient - lower running costs		
(92 plus) A		
(81-91) B		
(69-80) C		
(55-68) D	68	69
(39-54) E		
(21-38) F		
(1-20) G		
Not energy efficient - higher running costs		
England & Wales		
EU Directive 2002/91/EC		

EPC Rating: D Council Tax Band: E

Agents Note: Whilst every care has been taken to prepare these particulars, they are for guidance purposes only. All measurements are approximate and are for general guidance purposes only and whilst every care has been taken to ensure their accuracy, they should not be relied upon and potential buyers/tenants are advised to recheck the measurements

Land Estate
6 Market Street
Dartford
Kent
DA1 1ET

01322 413501
info@landestate.co.uk



LAND ESTATES
SALES, LETTINGS & MANAGEMENT